

SQL Server to DB2

SQL Server to Oracle

DB2 to Oracle

Sybase to SQL Server

Oracle to DB2

Oracle to Sybase

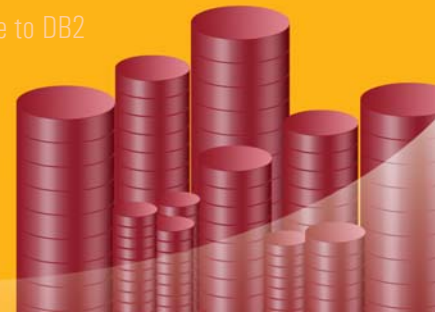
Sybase to Oracle

Oracle to Java

Sybase to DB2

DB2 to SQL Server

Oracle to SQL Server



## Database Migration Tools

**SwisSQL:** Automated Database Migration suite to ease migration of stored procedures, SQL queries, schema, and data from one database to another.

Applications developed for one database are not easily portable to another database, especially when they are built using proprietary database languages such as Oracle PL/SQL, MS SQL Server Transact-SQL, Sybase Transact-SQL, and IBM DB2 SQL. Database migration by conventional methods is resource intensive, which requires deploying large teams and spending long hours in manual, tedious migrations with unpredictable migration results.

SwisSQL offers a suite of automated database migration tools, which enables migration of complex proprietary stored procedures, database schema, SQL dialects, and enterprise data from one database to another. It automates up to 90% of the manual tasks of database migration.

### SwisSQL Benefits

- Automates database migrations up to 90%, saves up to 80% of time and cost
- User-friendly GUI requires no training or specific installations
- Affordable cost to suit all types of enterprises and ISVs
- Simple and reliable migration ensures application and data integrity, eliminating unpredictable migration results
- Automated application and data migration ensures short system testing cycle with predictable issues
- Enhanced productivity for DBAs handling different databases
- ISVs can create database applications portable and interoperable with multiple databases
- Complete database migration suite with SQL, stored procedures, and data migration
- Completely automated schema and data migration
- Support for conversion of advanced SQL features such as cursors, ref cursors, theta joins, ANSI outer joins, sub-queries, conditional statements, control statements, CASE, DECODE, etc.
- Generates comprehensive migration reports

### Database Migration Solutions

SwisSQL offers specific tools with intuitive GUI to migrate stored procedures from one database to another. SwisSQL supports stored procedure migration across databases such as Oracle, MS SQL Server, IBM DB2 UDB, and Sybase ASE.

SwisSQL database migration solutions include

- **Stored Procedure Migration**
- **Data Migration**
- **SQL Query Migration**

### Stored Procedure Migration Tools

#### Stored Procedure Migration to Oracle

- SQL Server to Oracle Migration
- DB2 to Oracle Migration
- Sybase to Oracle Migration

### SwisSQL Features

- Database migration support for industry-leading databases such as Oracle, IBM DB2 UDB, MS SQL Server, and Sybase ASE
- SQL query conversion support for Oracle, IBM DB2 UDB, MS SQL Server, Sybase ASE, Informix, PostgreSQL, and MySQL
- Automated migration of stored procedures, functions, triggers, database schema, and data from one database to another
- More than 90% automated conversion across stored procedures such as Oracle PL/SQL, MS SQL Server Transact-SQL, Sybase Transact-SQL, and IBM DB2 SQL

## Stored Procedure Migration to SQL Server

- Oracle to SQL Server Migration
- DB2 to SQL Server Migration
- Sybase to SQL Server Migration

## Stored Procedure Migration to DB2

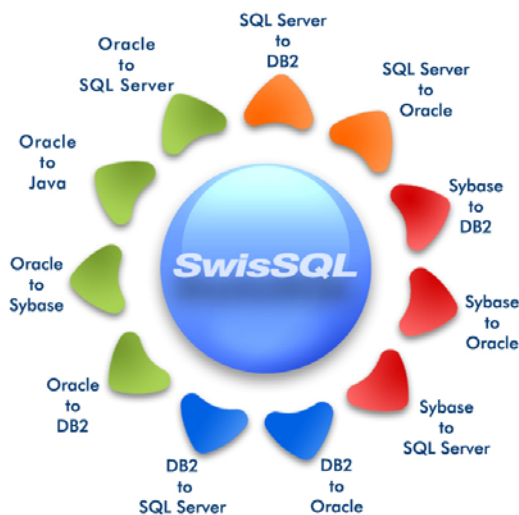
- Oracle to DB2 Migration
- SQL Server to DB2 Migration
- Sybase to DB2 Migration

## Stored Procedure Migration to Sybase

- Oracle to Sybase Migration

## Stored Procedure Migration to Java

- Oracle to Java Migration



## Data Migration Tool

SwisSQL offers a complete *Data Migration Tool* that helps the migration of database schema and data across leading databases such as Oracle, IBM DB2 UDB, MS SQL Server, Sybase ASE, MySQL MaxDB, and MySQL. It offers an open, user-friendly, and extensible migration process ensuring reliability and data integrity.

## SQL Query Migration/Conversion

SwisSQL provides Console, a multi-dialect SQL parser and conversion engine. It supports Oracle, MS SQL Server, IBM DB2 UDB, Informix, Sybase ASE, MySQL, PostgreSQL, MySQL MaxDB, and ANSI SQL. SwisSQL offers specific tools based on Console to convert SQL queries from one dialect to another.

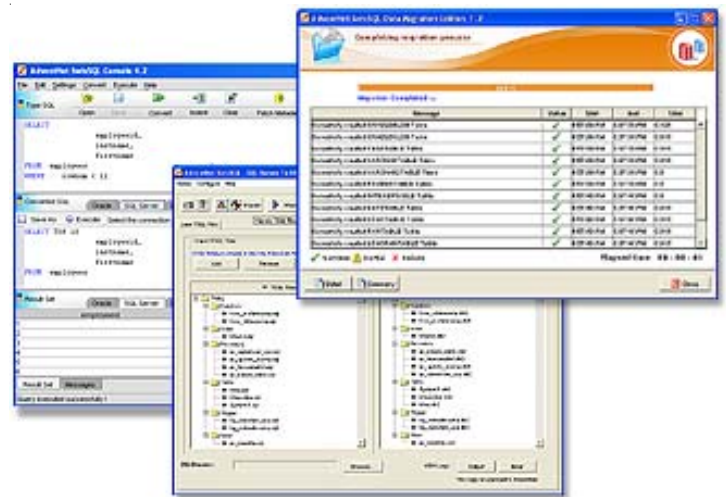
## SwisSQL - API

SwisSQL API provides standards-based multi-dialect SQL solution to enable applications work with multiple databases without porting SQL statements from one database dialect to another.

SwisSQL API is available in two flavors: Java/J2EE Edition for Java-based applications and .NET Edition for .NET, C#, VB, and VC++ based applications.

## SwisSQL - Console

SwisSQL Console is a graphical user interface to convert SQL queries from one database dialect to another. DBAs and developers working with multiple databases can type a SQL query in one database dialect and view the equivalent in other database dialects.



## System Requirements

**Hardware Requirements:** PIII 800 MHz, 128 MB RAM, and 50 MB Hard disk space  
**Operating Systems:** Windows 2000 / NT 4.0 / XP